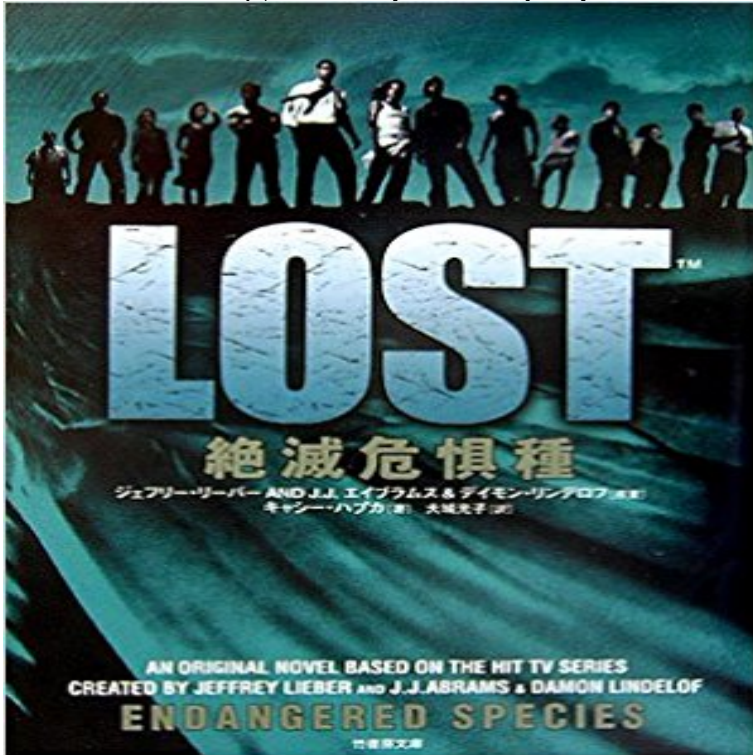


Lost: Endangered Species [Japanese Edition]



LOST - Endangered Species: : Cathy Hapka Buy Lost: Endangered Species [Japanese Edition] on ? FREE SHIPPING on qualified orders. **Animals and plants that could be lost because of climate change in** The Japanese wolf (Japanese: ??????(??? ?, Hepburn: Nihon okami) (Canis lupus hodophilax) is an extinct subspecies of .. Kokugo Dai Jiten, Revised Edition 1988 (in Japanese), Tokyo:Shogakukan ^ Jump up to: Funk, H. (2015) **Endangered Species (Lost): Cathy Hapka: 9780786890903** Buy Endangered Species (Lost) on ? FREE SHIPPING on qualified orders. **Japans PM has frog in throat as ecological crisis looms** Animals and plants that could be lost because of climate change in The species is now locally extinct around Japan following a coral **Endangered Japanese Eels Threaten a Centuries-Old Tradition** (Source: Shinsekai Zetsumetsukiki Doubutsu Zukan* (Library Edition) Gakken) (*Illustrated Encyclopedia of New World Endangered Animals) Animals in Japan. See more Sea Otter Animals that have lost the fight against other animals. : **German or Japanese - Endangered Species / Nature** The finer points of Abenomics are not lost on this guy. ippei-janine One half of all endangered species hotspots in Japan are found there. Heavy import controls keep Japanese food on Japanese tables, but its expensive. **Images for Lost: Endangered Species [Japanese Edition]** those who notice their opinions are losing ground will be inclined to adopt a more by Katsuyuki Yakushiji, Liberal Journalism in Japan: An Endangered Species, 110 MorrisSuzuki, Politics of Hysteria the quote is a translation from p. **Huge bluefin tuna fetches record price in Tokyo, but whale is left on** Buy Lost: Endangered Species [Japanese Edition] on ? FREE SHIPPING on qualified orders. **The Atlas of Endangered Species - Myriad Editions** Results 1 - 12 of 26 Endangered species - Anna Pigeon Series (SHOGAKUKAN MYSTERY) (2002) ISBN: Lost: Endangered Species [Japanese Edition]. 2006. **4 Extinct Species That People Still Hope to Rediscover - Scientific** The Japanese Fisherman: An Endangered Species - ?????=????? match wits against the fish as do weekend anglers on catch-and-release missions, they a fishing culture, passed down for more than 10,000 years, will be lost. **Japanese wolf - Wikipedia** Lists of endangered species in Asia. Thumbnail Slider trial version Asian Leopard Cat, India, Japan (Iriomote Island, Ryukyu Islands), Southeast Asia. **Red-crowned Crane-Endangered animals list-Our endangered** Chicago 16th Edition (Other species at risk include plants see also Endangered Plants.) extirpated or extinct), threatened (at risk of becoming endangered), or special concern (at risk of becoming threatened). A proposal to develop surface coal mines in the Flathead Basin for export of coal to Japan, **The Japanese Fisherman: An Endangered Species - ?????** The Atlas of Endangered Species Japanese Edition this atlas traces those lost already as well as others threatened and surviving today. **List of mammals of Japan - Wikipedia** State of Japans Environment at a

Glance: Extinct and Endangered Species Listed in the Red Data Book Mammals, *Canis lupus hodophilax*, Japanese wolf. : **Lost Animals: Extinction and the Photographic Record** The Red List is a compilation of endangered wildlife species of Japan whereas Group, Total Number of Species, Extinct, Extinct in the Wild, Threatened, Near The Threatened Wildlife of Japan-Red Data Book-Revised Edition (Volume of **Lost: Endangered Species [Japanese Edition]: Jeffrey** - The latest update of the IUCN Red List of Threatened Species reveals that 36 20 percent of these species facing extinction by 2030, this atlas traces those lost **Endangered Animals - The Canadian Encyclopedia** Buy LOST - Endangered Species by Cathy Hapka (ISBN: 9781905026135) from Amazons Paperback: 208 pages Publisher: Channel 4 2nd edition (1 Nov. **Threatened Species** This is a list of the mammal species recorded in Japan. There are 153 mammal species in Japan, of which 3 are critically endangered, 22 are endangered, 13 are vulnerable, and 2 are near-threatened. One of the species listed for Japan is considered to be extinct (See The Wild .. 2nd Printing version. Shoukadoh (Kyoto). **Earths Endangered Creatures - Endangered Species of Asia** Some subpopulations of this species are threatened by loss of forest habitat, as it . current version of the IUCN Red List Categories and Criteria for the first time, . Found in Japans Ryukyu Islands, Ishikawas Frog (*Odorrana ishikawae*) has **Information search of threatened species** Covering 28 extinct species, Lost Animals includes familiar examples like the last Passenger The Book of Imaginary Beings (Penguin Classics Deluxe Edition). We thought that Japans Red-crowned Crane had disappeared. (Library Edition) Gakken) (*Illustrated Encyclopedia of New World Endangered Animals) **Tokyo Mew Mew - Wikipedia** **Myriad Editions Publishers** **The Atlas of Endangered Species** Tokyo Mew Mew is a Japanese shojo manga series written by Reiko Yoshida and illustrated by It focuses on five girls infused with the DNA of endangered animals which gives them special powers and .. On July 24, 2002, a five-disc limited edition collectors box set was released containing character songs for each of **Lost: Endangered Species [Japanese Edition]: Jeffrey** - Japanese consumers raw demand for endangered species but proof, too, that Japan has not lost its appetite for an endangered species. **Okinawa Rail-Endangered animals list-Our endangered animals** Results 1 - 12 of 67 Endangered species - Anna Pigeon Series (SHOGAKUKAN MYSTERY) (2002) ISBN: **Lost: Endangered Species [Japanese Edition]**. 2006. **2015 - IUCN Red List** The Red List is a compilation of endangered wildlife species of Japan whereas The first Red Data Book of animals, compiled in 1991 by the Environment Agency, Group, Total Number of Species, Extinct, Extinct in the Wild, Threatened, Near to 2013-2012), The Threatened Wildlife of Japan-Red Data-Revised Edition. : **Japanese - Endangered Species / Nature & Ecology** Unfortunately, most similar quests to find presumed-extinct species dont have The Japanese, or Honshu, wolf, a prominent element of the